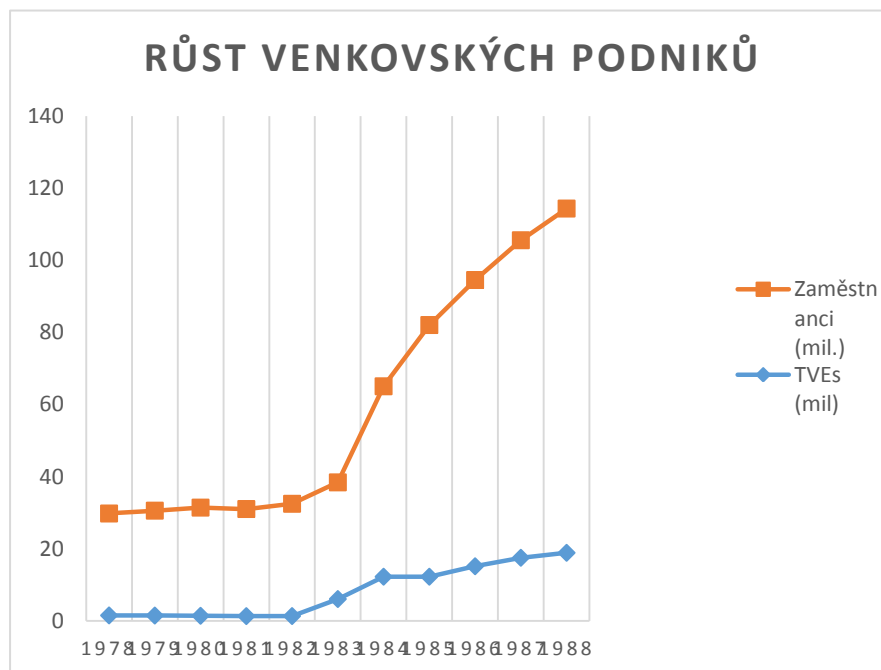
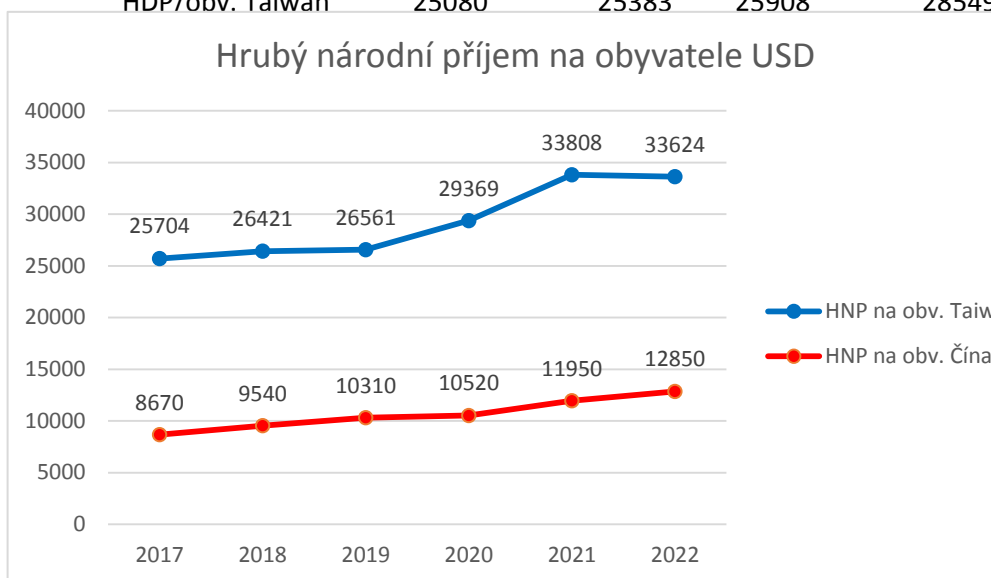


	TVEs (mil)	Zaměstnanci (mil.)	HDP v miliardách RMB
1978	1.52	28.26	13.3
1979	1.48	29.09	14.8
1980	1.42	29.99	17.7
1981	1.33	29.69	19.6
1982	1.34	31.13	23
1983	6.06	32.35	27.4
1984	12.25	52.8	43.3
1985	12.25	69.79	73.6
1986	15.15	79.37	95.6
1987	17.5	88.05	128.6
1988	18.88	95.45	175.4



	2017	2018	2019	2020
Růst HDP(%) CHN	6.95	6.75	5.95	2.24
Růst HDP(%) TAIW	3.31	2.79	3.06	3.39

	2017	2018	2019	2020
HDP/obv. Čína	8820	9910	10145	10410
HDP/obv. Taiwan	25080	25383	25908	28549



	2017	2018	2019	2020
HNP na obv. Taiw	25704	26421	26561	29369
HNP na obv. Čína	8670	9540	10310	10520

	Leden	Únor	Březen	Duben
Čína	2.4	2.4	3.9	5.6
Taiwan	-23.53	-9.98	-16.03	-22.6

			Taiwan	Čína
2017	590.73	315.49	53.41%	18.44%
2018	609.20	334.01	54.83%	17.95%
2019	611.40	329.16	53.84%	17.44%
2020	673.18	345.13	51.27%	17.65%
2021	775.74	446.37	57.54%	19.00%

2022

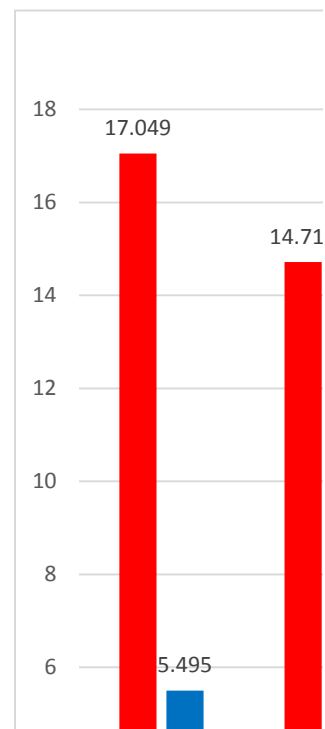
760.46

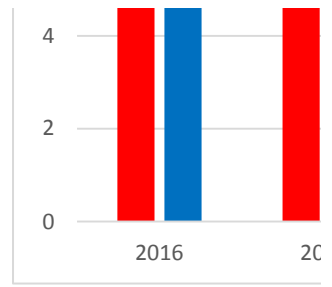
479.42

63.04%

19.80%

	2016	2017
Čína	17.049	14.718
Taiwan	5.495	5.936





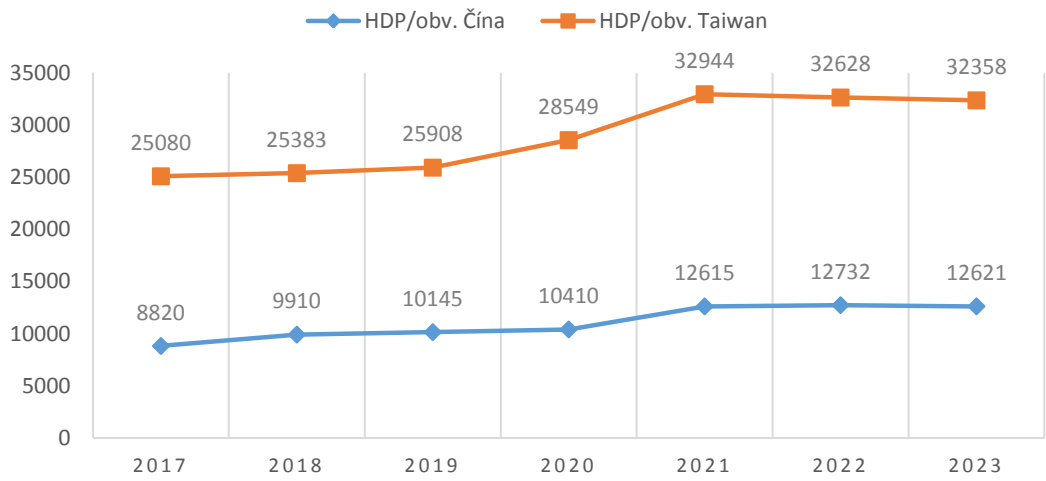
	Růst HDP (%)	HDP (mil.USD)	HDP/obv. (USD)	HNP (mil.USD)	HNP/obv. (
2017	3.31	590,780	25,080	605,477	25,704
2018	2.79	609,251	25,838	623,005	26,421
2019	3.06	611,336	25,908	626,731	26,561
2020	3.39	673,252	28,549	692,582	29,369
2021	6.62	773,135	32,944	793,410	33,808
2022	2.59	760,813	32,625	784,118	33,624
2023	1.4	756,012	32,358	778,683	33,329

2021	2022	2023
8.45	2.99	5.20
6.62	2.59	1.4

2021	2022	2023
12615	12732	12621
32944	32628	32358

USD

### HDP NA OBYVATELE (USD)

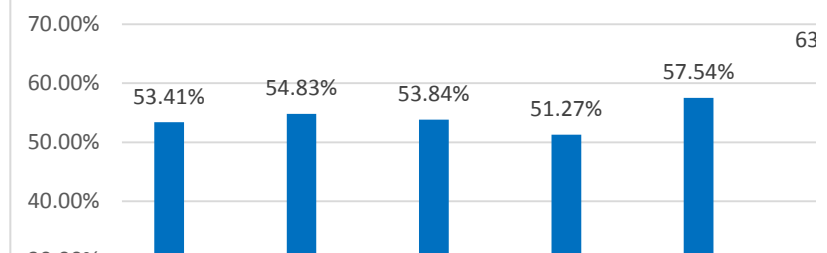


2021	2022
33808	33624
11950	12850

Květen	Červen	Červenec	Srpen	Září	Říjen
3.5	4.4	3.7	4.5	4.5	4.6
-15.71	-17.25	-15.46	-10.81	-6.93	-2.27

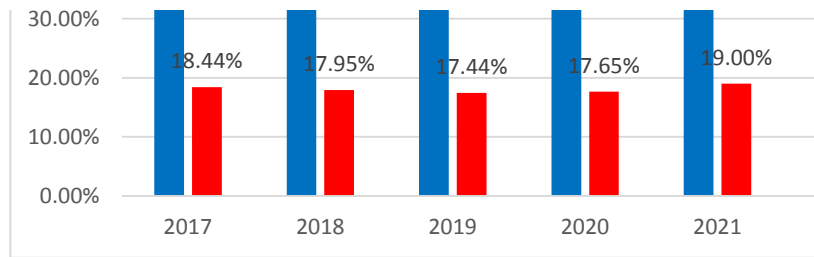
### Název grafu

2017  
2018  
2019  
2020  
2021



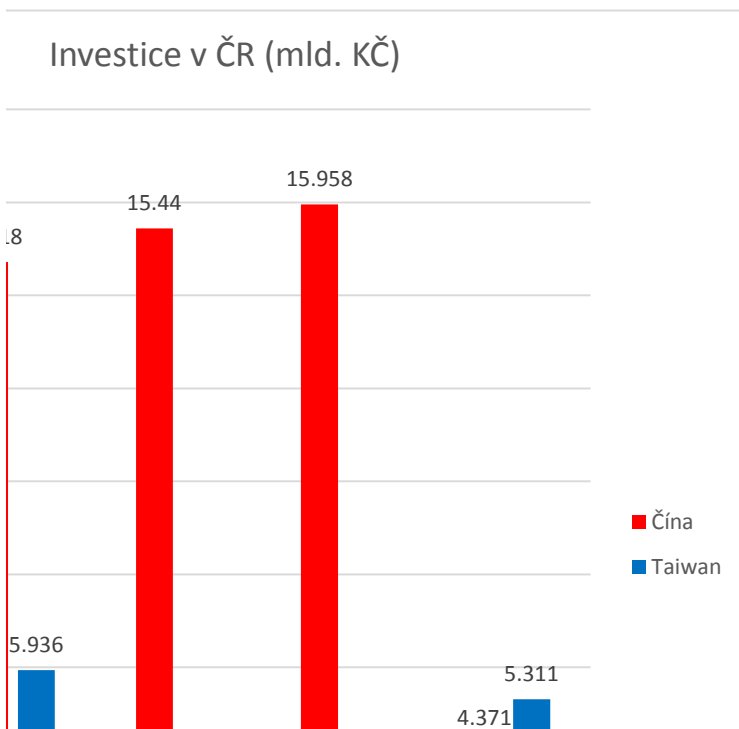
63

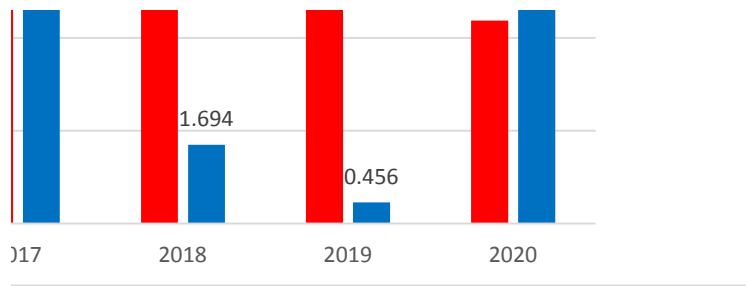
2022



	2017	2018	2019	2020	2021
Čína	4.23	3.50	1.29	0.49	4.55
Taiwan	0.6	1.4	0.6	-0.2	2

	2018	2019	2020
	15.44	15.958	4.371
	1.694	0.456	5.311



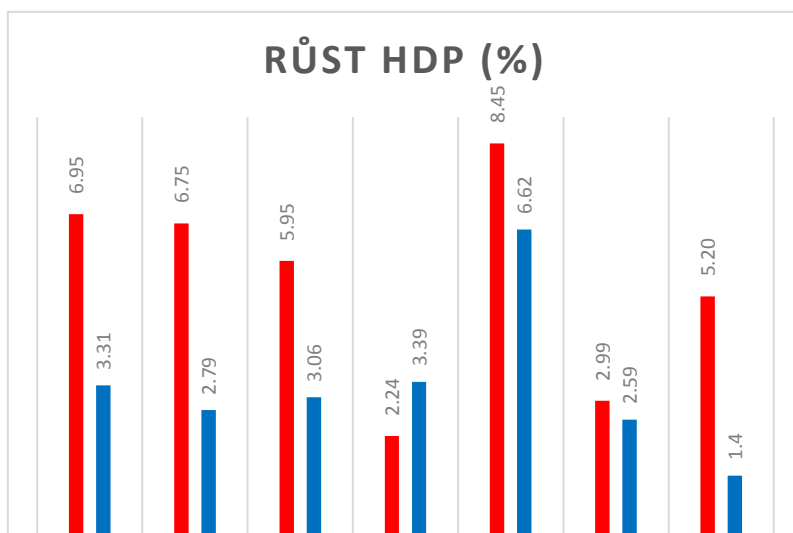
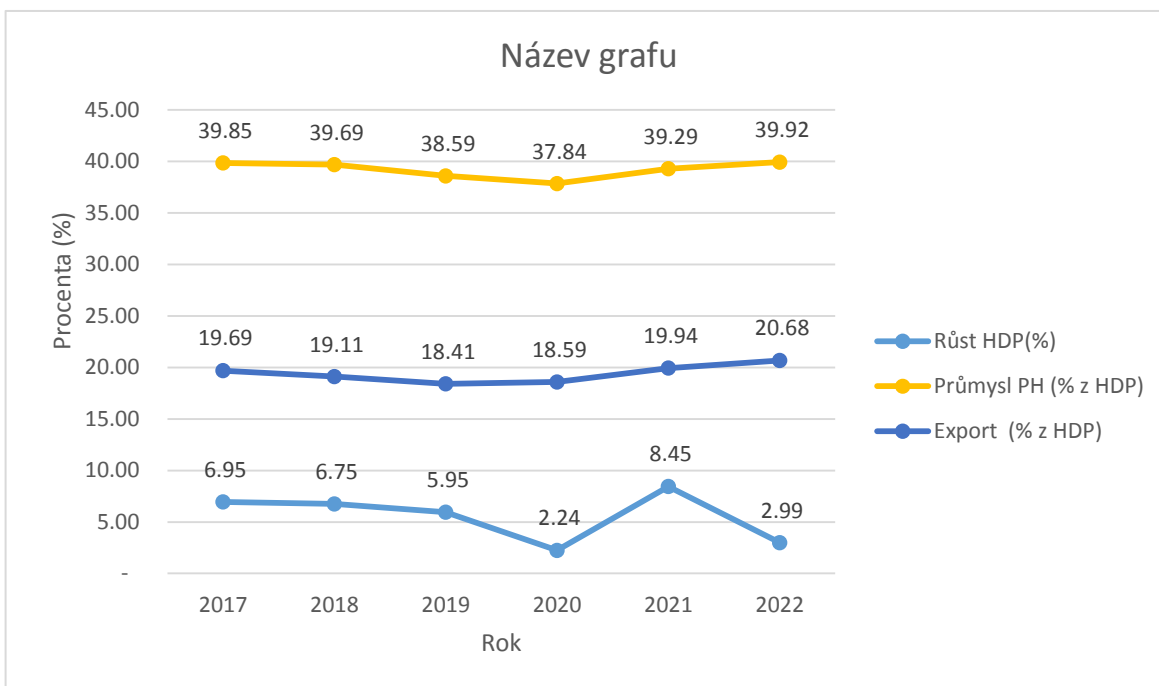


Hong Kong	402.2%
Luxembourg	388.1%
Singapore	338.3%
San Marino	304.9%
Malta	287.7%
Ireland	229.4%
Djibouti	223.1%
Slovakia	187.8%
Vietnam	186.5%
Belgium	172.7%
USA	25.50%
China	37.50%
Germany	88.70%
Rusia	52.20%



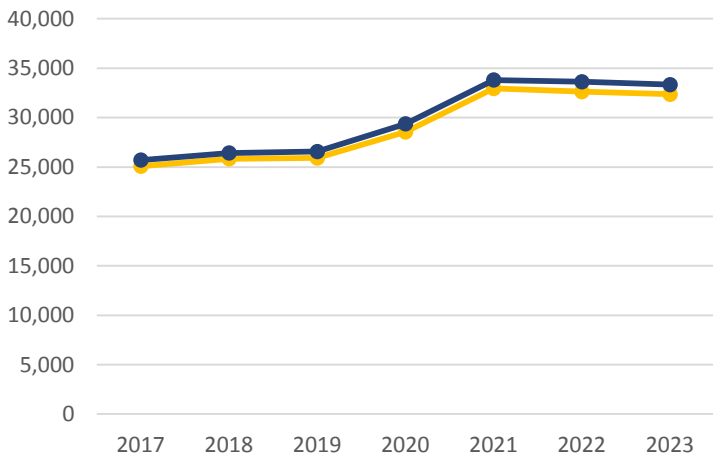
USD)

	2017	2018	2019	2020	2021
HDP(bil. U\$)	12.31	13.894	14.279	14.687	17.82
Růst HDP(%)	6.95	6.75	5.95	2.24	8.45
Inflace(%)	4.23	3.50	1.29	0.49	4.55
Zemědělst	7.46	7.04	7.14	7.70	7.24
Průmysl PH	39.85	39.69	38.59	37.84	39.29
Export (%)	19.69	19.11	18.41	18.59	19.94
Import( (%)	17.94	18.45	17.48	16.17	17.36
Vojenské v	1.71	1.67	1.68	1.76	1.61

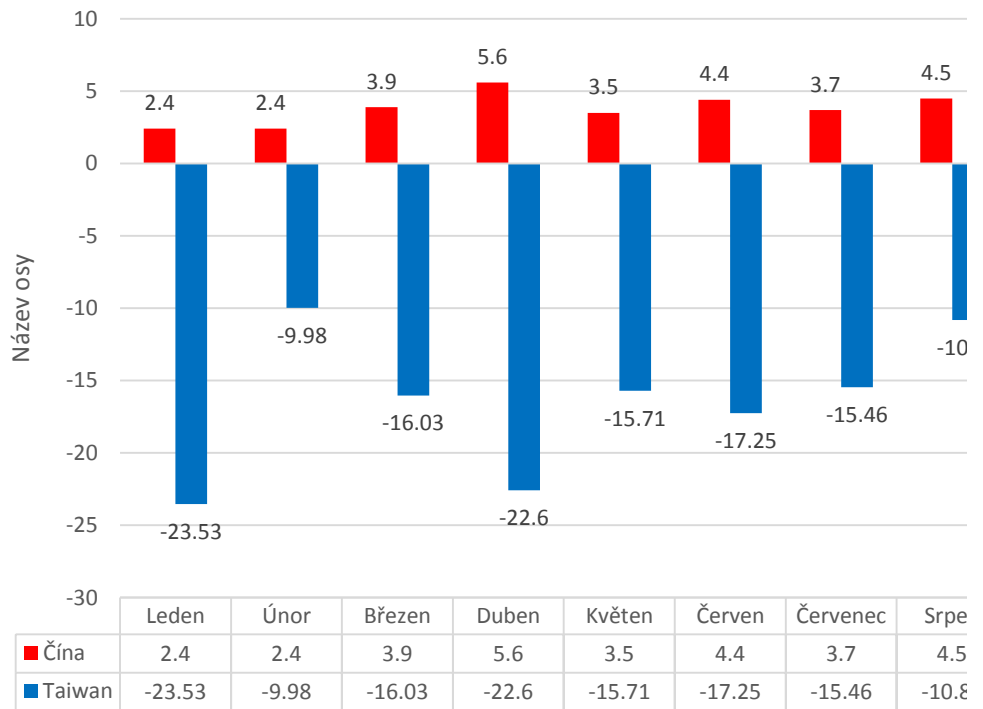




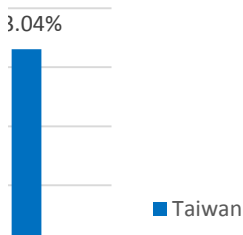
### HDP a HNP na obyvatele 2017-2023



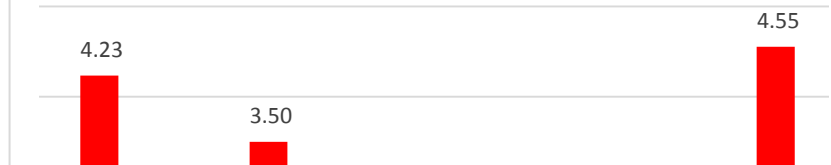
### Meziroční změna průmyslové produkce 20

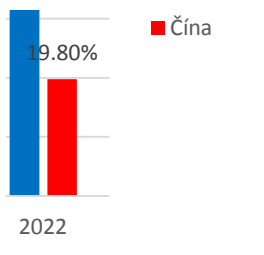


Listopad 6.6  
Prosinec 6.8  
-2.48 -3.99

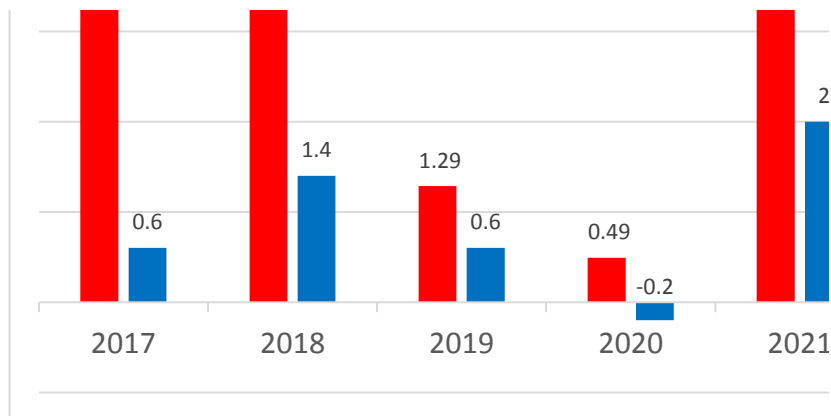


### Inflace v %





2022	2023
2.25	0.20
2.9	2.5



TAIWAN	2018	2019	2020	2021
Import z ČR (mld. CZK)	4.6	5.6	6.1	6.31
Export do ČR (mld. CZK)	26.7	26.6	29.4	33.06
Saldo s ČR (mld. CZK)	22.11	20.98	23.32	26.74

ČÍNA	2018	2019	2020	2021
Import z ČR (mld. CZK)	56.16	56.7	61.7	65.04
Export do ČR (mld. CZK)	568.5	650.3	715.9	761.63
Saldo s ČR (mld. CZK)	512.34	593.58	656.98	696.6



2022

17.963

2.99

2.25

7.30

39.92

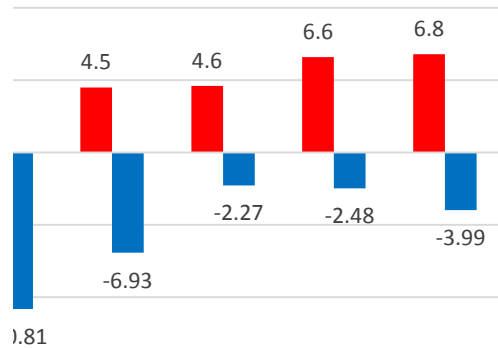
20.68

17.47

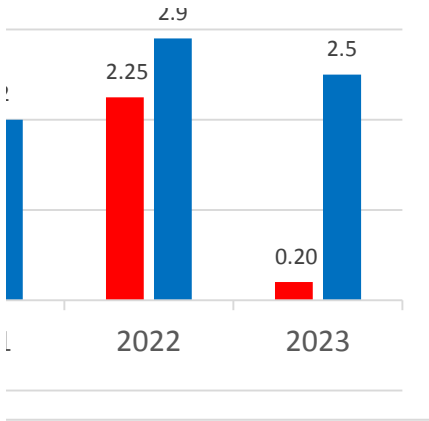
1.60



2022/23 (%)



en	Září	Říjen	Listopad	Prosinec
i	4.5	4.6	6.6	6.8
31	-6.93	-2.27	-2.48	-3.99



<b>2022</b>
7.93
38.03
30.1

<b>2022</b>
63.73
1,041.94
978.21